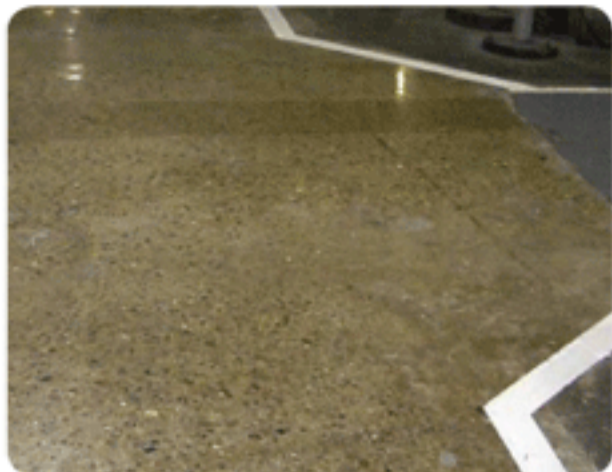


Sher·Hard™

Sealer, Hardener & Densifier



Prepare the floor by grinding and honing using the appropriate series of abrasives until completing the 120 or 220 grit abrasive. Run at least one set of resin bonded diamonds prior to application of the Sherhard.

- 1.) Apply SherHard using a low-pressure sprayer, HVLP sprayer or auto scrubber. Spread Sherhard to ensure uniform coverage. Do not apply more product than you can grind in an 8 hour period.
- 2.) Apply enough Sherhard to keep the surface wet for 30 minutes. Coverage rates will vary based on porosity, humidity and temperature. Average coverage rates are between 400 and 600 square feet per gallon.
- 3.) Allow SherHard densifier to air dry. Do not remove the wet material from the floor.
- 4.) For additional gloss add a second thin application and polish until dry. This will improve the appearance.
- 5.) If necessary after the products has dried, any un-reacted material can be swept with a broom or rinsed and wet vaced with an auto scrubber .

Sherhard may be used as a concrete hardener and densifier.

New Concrete or Existing Concrete

Sherhard may be applied to new concrete as soon as the trowels are done.

The surface should be free from form release oils and contaminates.

Spray or spread enough Sherhard on the surface to ensure uniform coverage.

Apply enough Sherhard to keep surface wet for 30 minutes. It is not necessary to clean the surface prior to the application of a cure.

Cure Slab using either a wet cure or an ASTM C-309 approved cure.

If Sherhard is being used on existing concrete it is necessary to ensure that the Sherhard can adequately reach the surface. All surface membranes, coatings and sealers must be removed. A light surface grind using abrasives is preferred over chemical strippers.

The appearance of a light dust after the product has dried is normal. The dust can be removed using either a broom or an autoscrubber if desired.